

ROYAL SOUTHERN YACHT CLUB
WITH
ROYAL THAMES YACHT CLUB & ROYAL YACHTING ASSOCIATION

BRITISH KEELBOAT LEAGUE
in association with Bainbridge & Selden
YOUTH QUALIFIER
28/29th OCTOBER 2017
HAMBLE, HAMPSHIRE

Abbreviations:

PC – protest committee; RC – race committee; OA – organising authority; NA – national authority; RRS – racing rules of sailing; SI – sailing instructions; NoS – notice of series; BKL – British Keelboat League

SAILING INSTRUCTIONS

28 OCT – HW PORTSMOUTH 0432 3.9m, 1652 3.8m

29 OCT – HW PORTSMOUTH 0543 3.8m, 1809 3.7m

(all times are UTC)

1 RULES

- 1.1 The regatta will be governed by the rules as defined in *The Racing Rules of Sailing*, as modified by these SI's.
- 1.2 RRS 28.2, 44, 60, 61, 62, 63, 64.1, 65, 66, 70 and 78.3 will be changed by Attachment U to this SI.
- 1.3 RRS 31 is changed to: While racing, neither the crew nor any part of a boats hull shall touch a starting mark before starting, a mark that begins, bounds or ends the leg of the course on which she is sailing, or a finishing mark after finishing. In addition, while racing, a boat shall not touch a race committee vessel that is also a mark.
- 1.4 Add to RRS 41: (e) help to recover from the water and return on board a crew member, provided that the return onboard is at the approximate location of the recovery.
- 1.5 Boats shall comply with Associated British Ports Notice to Mariners No 3 of 2016 The Moving Prohibited Zone in the Precautionary Area which shall rank as an obstruction for the purposes of RRS 19 and 20. Boats shall avoid close quarters with any commercial vessel.
- 1.6 RRS 30.3 is deleted.
- 1.7 The Rules for Handling Boats set out in Attachment 3 of these Instructions shall apply.

2 BOATS AND SAILS

- 2.1 The event will be sailed in provided 8 metre one design boats, there are no class rules.
- 2.2 It is intended that the boats supplied will, as nearly as practicable, be identical, however differences in the condition and maintenance of boats, their sails and their equipment shall not be grounds for redress. Any breakage during the course of racing, that is reasonably unforeseeable by the sailors may be grounds for redress (this changes RRS 62.1 (a))

- 2.3. The sail combination to be used will be signalled from the race committee boat with or before the warning signal. The signals will have the following meanings:

<u>Signal</u>	<u>Meaning</u>
No signal	All sails may be used
Flag J	No spinnaker
Flag K	One reef in the main and no spinnaker

- 2.5 Other instructions may be given to the boats verbally by an umpire.

3 IDENTIFICATION AND ASSIGNMENT OF BOATS

- 3.1 Boats will be identified by bow number. Teams may also be required to wear team bibs.
- 3.2 Boats will be allocated by a draw by the OA. Teams will be notified of their first race at registration.
- 3.3 Boats will be exchanged in accordance with the race schedule.
- 3.4 The race committee may permit a substitute boat when it is satisfied that it is appropriate to do so. This substitution shall not be grounds for redress, this changes RRS 62.

4 NOTICES TO COMPETITORS

Notices to competitors will be posted on the official notice board located in the foyer of the Royal Southern Yacht Club.

5 CHANGES TO SAILING INSTRUCTIONS

- 5.1 Any change to the sailing instructions will be posted one hour before the start of the first race in which it will first take effect.
- 5.2 Any change to the schedule of races will be posted by 2000 on the day before it will take effect.
- 5.3 Any changes made afloat will be communicated orally by the umpires.

6 SIGNALS MADE ASHORE

- 6.1 Signals made ashore will be displayed on the Royal Southern Flagstaff.
- 6.2 When flag AP is displayed ashore, '1 minute' is replaced with 'not less than 30 minutes' in the race signal AP.

7 FORMAT OF RACING

- 7.1 The events shall consist of a series of fleet races with all boats in each race throughout the two racing days. Lists will be provided at the briefing each day showing in which races each team will take part. It is the intention that each team will race against every other team as often as possible throughout the weekend.
- 7.2 The race committee may change the format of racing if it feels this is necessary to achieve a fair result. Any change shall not be grounds for redress. This changes RRS 60.1(b).

8 SCHEDULE

- 8.1 Registration: 08:00 – 08:30 Saturday 28th October, River Room, RSrnYC.
- 8.2 Racing Days: 28th and 29th October
- 8.3 Briefing: 08:30 on Saturday. **Attendance by helms is mandatory.**
- 8.4 First Warning Signal: 09:57 on Saturday and 09:27 on Sunday.
- 8.5 Time of last warning: 16:00 on Sunday

9 WARNING SIGNAL

- 9.1 The Warning Signal Flag will be either an Orange, Black or Red flag, indicating the colour of the windward mark.

10 RACING AREA

- 10.1 The Central Solent. A more detailed location will be provided at the briefing.

11 THE COURSE

- 11.1 The course is described in Attachment 1.
11.2 All marks are to be left to Port.

12 MARKS

- 12.1 There will be three marks laid as windward marks, coloured Orange, Black and Red all of which will be inflatable buoys.
12.2 The leeward mark will be an Orange inflatable buoy.
12.3 The starting and finishing mark will be an Orange inflatable buoy.

14 THE START

- 14.1 Races will be started by using the following signals:

<i>Signal</i>	<i>Minutes before starting signal</i>	<i>Sound</i>	<i>Visual signals</i>
Warning	3	One	Warning Signal displayed
Preparatory	2	One	Flag P displayed
One-minute	1	One	Flag P removed
Starting	0	One	Warning Signal removed

- 14.2 When a boat is subject to RRS 29.1 flag X will not be displayed for more than 1 minute after the starting signal; this changes RRS 29.1. The race committee will attempt to hail the bow number of premature starters if reasonably practical.
14.3 A series of short sound signals may be made to advise competitors a warning signal is imminent.
14.4 The starting line will be between a staff displaying a Royal Southern Academy flag on the main committee boat at the starboard end the line and course side of the starting mark at the port end of the line.
14.5 A boat starting later than three minutes after her starting signal will be scored Did Not Start without a hearing. This changes RRS A4 and A5.

15 CHANGE OF THE NEXT LEG OF THE COURSE AND SHORTENING

- 15.1 The course will only be changed at the leeward mark and will be signalled by a committee boat displaying Flag C over a Orange, Black or Red flag, indicating that the next windward mark will be the colour of the flag displayed. This changes RRS 33.
15.2 The course will not be shortened. This changes RRS 32.

16 THE FINISH

16.1 The finishing line will be between a staff displaying a Royal Southern Academy flag on the main committee vessel and the course side of the finishing mark. This changes RRS Race Signals.

17 TIME LIMITS AND TARGET TIMES – changes RRS 35, A4 & A5

17.1 The target time for each race is 15 minutes.

17.2 The time limit for each race shall be 25 minutes. If no boat has sailed the course and finished within the time limit the race shall be abandoned.

17.3 Boats failing to finish within two minutes after the second boat sails the course and finishes will be scored for the place the umpires judge them to be in at that time without a hearing. This score shall not be grounds for redress, this changes RRS 60.1(b)

18 PROTESTS AND REQUESTS FOR REDRESS

18.1 The rules as modified in Attachment U shall apply and protests and request for redress shall be made in accordance with that attachment.

18.2 The right of appeal is denied under RRS 70.5(a).

18.3 When the race umpires decide that a boat has broken RRS 14 and injury or damage has resulted, they may impose a points penalty without a hearing. The competitor shall be informed of the penalty as soon as practicable and, at that time of so being informed, may request a hearing. The PC shall then proceed under U5.3. Any penalties decided by the PC may be more than the penalties imposed by the umpires. This changes RRS 64.1 and A4.

18.4 Breaches of RRS 55, NoR 1.5, 5.5. SI 20, 21, 25-28, and SI Attachment 3 shall not be grounds for protest by a boat, this changes RRS 60.1(a). Failure to act on any breach will not be grounds for a protest or a request for redress by a boat, this changes RRS 62. Penalties for these breaches may be less than disqualification if the PC so decides.

19 SCORING

19.1 A High Point Scoring System will apply. No scores shall be excluded.

19.2 Points will be awarded with first place being equal to the number of boats available at the start of the event, second place will be one point less and so on.

19.3 The Score for DNC, DNS, OCS, RET or DSQ will be zero points. This changes RRS A4.

19.4 To request correction of an alleged error in posted race or series results, a boat may complete a scoring enquiry form available at the race office.

19.5 When the Race Committee determines that it is no longer possible to achieve any more races and there are teams with fewer race results than the team with the most race results, then places will be calculated by the average score of each team to two decimal places.

20 SAFETY REGULATIONS

20.1 RRS 40 shall apply at all times when sailing or transferring between boats. This changes the preamble to Part 4 of the Racing Rules of Sailing.

21 REPLACEMENT OF CREW OR EQUIPMENT

21.1 Substitution of competitors will not be allowed without prior written approval of the OA.

21.2 Substitution of damaged or lost equipment will not be allowed unless authorized by the OA. Requests for substitution shall be made to the OA at the first reasonable opportunity.

22 BREAKDOWN

22.1 Before the warning signal of a race or within **two** minutes of changing into a new boat, whichever is the later, a boat may display flag L to signal breakdown or damage to the boat, her sails, or injury to her crew and request a delay to the next start. She shall proceed as soon as possible to a position just to leeward of the main RC boat and remain there unless otherwise directed.

22.2 The time allowed for repairs will be at the discretion of the RC.

22.3 After the warning signal of a race, it will not be postponed or abandoned due to breakdown unless the breakdown signal was displayed as required by SI 22.1.

22.4 Except when RRS 62.1(b) applies, failure to effect repairs in the time allowed, or breakdowns after the attention signal shall not be grounds for redress, this changes RRS 62.

23 CAMERAS AND ELECTRONIC EQUIPMENT

23.1 Boats may be required to carry cameras, sound equipment or positioning equipment as specified by the organizing authority.

24 OFFICIAL BOATS

24.1 Official boats will be identified at the briefing.

25 SUPPORT BOATS

25.1 Support boats shall be clearly marked with the club name or identify the club they are supporting.

25.2 Support boats must remain a minimum distance of 50 meters from any racing boat, mark, start or finish line and shall ensure that they do not make waves or swell in the racing area or otherwise affect racing.

28 RADIO COMMUNICATION

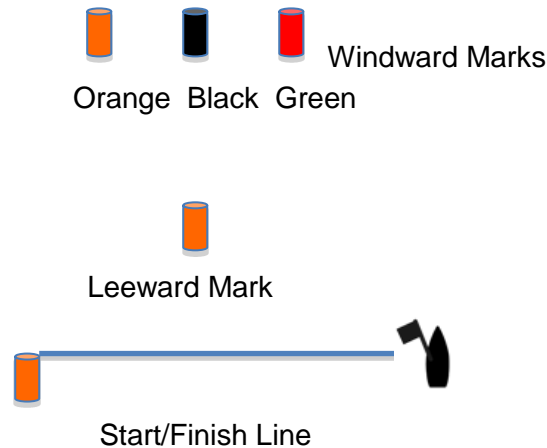
28.1 A boat shall neither make radio transmissions while racing nor receive radio communications. This restriction also applies to mobile telephones.

29 PRIZES

29.1 Prizes will be awarded to the first 3 boats in the series.

Attachment 1

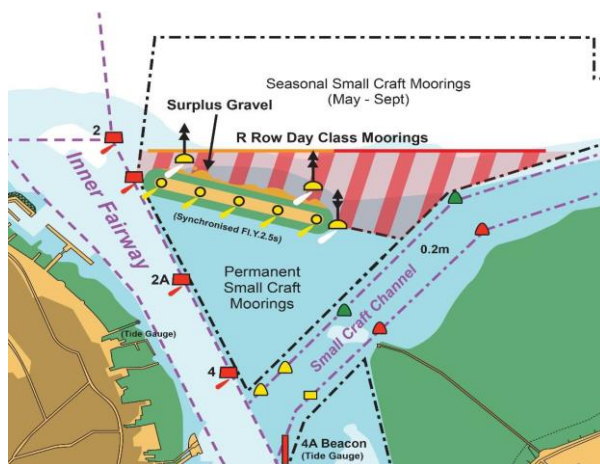
THE COURSE



Start – Windward Mark (P) – Leeward Mark (P) - Windward Mark (P) - Finish

Attachment 2

- 1.1 Boats shall not anchor or kedge in the Cowes Harbour fairway or within the area denoting power cables and gas pipes between Stone Point and Gurnard Bay, as shown on Admiralty Chart 2040, or within the mining ground area north east of Ryde Sand.
- 1.2 All yachts shall comply with Associated British Ports Notice to Mariners No 3 of 2016 giving details of a Precautionary Area and Moving Prohibited Zone (MPZ). The MPZ shall rank as an obstruction for the purposes of RRS 19 and 20.
- 1.3 Whilst racing, boats shall pass to the north of the Cowes Breakwater.
- 1.4 Boats, whilst racing and in whatever direction they are sailing, shall stay out of the area of Day Class Moorings shown in the diagram below. The northernmost line of moorings shall rank as an obstruction for the purposes of RRS 19 and 20. Boats are further requested not to sail in this area when proceeding to and from the race area (with the exception of those boats proceeding to or from one of the moorings within this area).
[DP]



Attachment 3

RULES FOR THE HANDLING of BOATS

1 GENERAL

1.1 While all reasonable steps are taken to equalise the boats variations will not be grounds for redress. This changes RRS 62.

2 PROHIBITED ITEMS and ACTIONS - Except in an emergency or in order to prevent damage or injury, or when directed by an umpire otherwise, the following are prohibited:

2.1 Any additions, omissions or alterations to the equipment supplied. Including but not restricted to: marking on the hull with permanent ink or use of any tape that leaves a residue (duct tape etc.). Adjusting or altering the tension of standing rigging, excluding the backstay. Adjusting lifeline tension.

2.2 The use of any equipment for a purpose other than that intended or specifically permitted.

2.3 The replacement of any equipment without the approval of the RC.

2.4 Sailing the boat in a manner that it is reasonable to predict that significant damage would result.

2.5 Moving equipment from its normal stowage position except when being used.

2.6 Boarding or taking a boat from its berth or mooring without having paid the required damage deposit or without the permission of the RC, or, on race days, while flag "AP" is displayed ashore.

2.7 Perforating or attaching anything to sails, even to attach tell tales.

2.8 Using a winch to adjust the mainsheet, backstay or vang.

2.9 Using a reef line as an outhaul.

2.10 Cross winching jib sheets or omitting any headsail car or turning block.

2.11 The use of electronic instruments other than hand held compasses, watches audio/visual recording equipment.

2.12 The use of the shrouds (including any inner shrouds) above the lower bottle screw (turnbuckle) to facilitate tacking or gybing is prohibited.

2.13 Tacking with the head of the spinnaker above the gooseneck.

2.14 The bowsprit shall be fully retracted at all times except when the spinnaker is being set, is set, or is being retrieved, and shall be retracted at the first reasonable opportunity after the retrieval. An extended bowsprit shall not be considered part of the boat for the purposes of: Establishing an overlap; or establishing right of way, unless the spinnaker is set.

2.15 A breach of SI Attachment 3 is not open to protest by boats but is subject to action by Umpires in accordance with SI U4.1. This changes RRS 60.1.

3 PERMITTED ITEMS and ACTIONS – the following are permitted:

3.1 Taking on board the following equipment:

- (a) basic hand tools
- (b) adhesive tape
- (c) line (elastic or otherwise of 4 mm diameter or less)
- (d) tell tale material
- (e) watch, timers and hand held compass
- (f) shackles and clevis pins
- (g) Velcro tape
- (h) spare flags
- (i) PFD's when not supplied by the OA
- (j) Electronic recording equipment restricted to sound, video and audio.

- 3.2 Using the items in 3.1 to:
- (a) prevent fouling of lines, sails and sheets
 - (b) prevent sails being damaged or falling overboard
 - (c) mark control settings
 - (d) make minor repairs and permitted adjustments
 - (e) personal safety
- 3.3 Fixing a spinnaker sheet catcher at the bow, providing that it does not extend the length of the boat more than 100 mm and does not require any repair after removal.
- 3.4 Changing the number of mainsheet purchases.

4 MANDATORY ITEMS and ACTIONS – the following are permitted:

- 4.1 The completion of a written damage report before leaving a boat and submitting it to the RC, even if no damage or loss is recorded. Reports shall include any evidence of matters which could cause damage or disadvantage to the boat in future matches. When boat swaps are carried out on the water, the report should be made verbally to the RC as soon as possible.
- 4.2 At the end of each sailing day:
- (a) folding, bagging and placement of the sails as directed
 - (b) Removing all trash and leaving the boat in the same state of cleanliness as when first boarded that day
 - (c) releasing backstay tension
- 4.3 When leaving a boat, cleaning the boat (cabin and decks), removing all trash and removing all tape and marks.
- 4.4 Any request to alter, in any way, the equipment on a boat shall be in writing and worded to permit a yes/no answer.
- 4.5 Complying with any regulations, including speed restrictions and navigation marks, while leaving or returning to the berth or mooring.
- 4.6 A breach of items 4.2 and 4.3 will be considered as damage and the cost of rectification will be deducted from the damage deposit.

Attachment 4

Penalties for damage resulting from contact between boats racing

SI U 5.4 permits umpires to determine the penalty for breaking RRS 14 without a hearing. This Attachment explains how damage will be assessed and prescribes the appropriate level of penalties. The PC may impose additional penalties if it has good reason to do so. There are a number of things we are trying to achieve with penalties for damage:

- Minimise damage to keep costs down and avoid delays while boats are being repaired.
- Ensure that penalties are consistent and fit the breach.
- Keep race results “on the water”.
- Give more sailing to everybody for the same entry fee!

Damage Levels

Level	Extent	Effect
Level A - Minor Damage	Up to 1 man hour to repair	Boat may race without repair
Level B - Significant Damage	More than 1 hour and up to 5 man hours to repair	Boat may need some (temporary) work before racing again.
Level C - Major Damage	More than 5 man hours to repair	Significant work required before racing again.

Penalties

Race penalties may be imposed by umpires after a race to those boats that break RRS 14. Any penalties are applied to one boat’s or both boats’ score in the race in which the damage occurred.

Level	Race Penalty
Level A	1 point deduction
Level B	3 point deduction
Level C	6 point deduction

Deductions from Damage Deposits

Any deductions from damage deposits are a matter for the OA and do not affect any race points penalties applied by the Umpires or PC. Subsequent assessments of the damage level after further inspection, whether the level turns out to be higher or lower, will have no effect on the race points penalties given on the water.

ATTACHMENT U

This attachment changes RRS 28.2, 44, 60, 61, 62, 63, 64.1, 65, 66, 70.

U1 CHANGES TO RACING RULES

Additional changes to rules are made in instructions U2, U3, U4, and U5.

U1.1 Changes to Rules Involving Protests, Requests for Redress, Penalties and Exoneration

- (a) The first sentence of RRS 44.1 is replaced with: 'A boat may take Penalty as described in U2.2 when she may have broken a rule of Part 2 (except RRS 14 when she has caused damage or injury) or RRS 31 or 42 while racing.'
- (b) RRS 60.1 is replaced with 'A boat may protest another boat, but not for RRS 14, or request redress provided she complies with instructions U2.1 and U2.4.'
- (c) The third sentence of RRS 61.1(a) and all of RRS 61.1(a)(2) are deleted.
- (d) RRS 64.1(a) is changed so that the provision for exonerating a boat may be applied by the umpires without a hearing, and it takes precedence over any conflicting instruction of this attachment.
- (e) Rules P1 to P4 shall not apply.
- (f) RRS 30is deleted.

U2 PROTESTS AND REQUESTS FOR REDRESS BY BOATS

U2.1 While racing, a boat may protest another boat under a rule of Part 2 (except RRS 14) or under RRS 31 or 42; however, a boat may only protest under a rule of Part 2 for an incident in which she was involved. To do so she shall hail 'Protest' and conspicuously display a Flag Y at the first reasonable opportunity for each. She shall remove the flag at the first reasonable opportunity after a boat involved in the incident has taken a penalty voluntarily or after an umpire's decision. This changes RRS 60.1

U2.2 A boat that protests as provided in instruction U2.1 is not entitled to a hearing. Instead, a boat involved in the incident may acknowledge breaking a rule by taking a voluntary penalty by either:

- (a) Before her starting signal or when on a leg to a windward mark, a gybe-penalty; she shall, after getting well clear of other boats as soon as possible, take a penalty by gybing until her mainsail fills on the new tack.
- (b) When on a leg to a leeward mark or the finishing line, a tack-penalty; she shall, after getting well clear of other boats as soon as possible, take a penalty by passing through head to wind and bear away to a close-hauled course on the new tack. The head of the spinnaker must be below the gooseneck before passing head to wind.
- (c) If the protested boat does not take a penalty voluntarily, an umpire will decide whether to penalize any boat and signal the decision as provided in instruction U3.1. This changes RRS 63.1 & 64.1

U2.3 A boat may protest another boat
Under a rule other than instruction U3.2 or U4.2(a), or a rule listed in instruction U2.1, or request redress by clearly displaying a red flag as soon as possible after Finishing. She shall display the red flag within two minutes of finishing or retiring until she has informed the Race Committee.

U2.5 The race committee will promptly inform the protest committee about any protests or requests for redress made under instruction U2.3 or U2.4.

U3 UMPIRE SIGNALS AND IMPOSED PENALTIES

U3.1 An umpire will signal a decision as follows:

- (a) A green and white flag with one long sound means 'No penalty.'
- (b) A red flag with one long sound means 'A penalty is imposed or remains outstanding.' The umpire will hail or signal to identify each such boat.
- (c) A black or black and white flag with one long sound means 'A boat is disqualified.' The umpire will hail or signal to identify the boat disqualified.

U3.2

- (a) A boat penalized under instruction U3.1(b) shall take a One-Turn Penalty as described in RRS 44.2 except that in addition the head of the spinnaker must be below the gooseneck before passing head to wind.
- (b) A boat disqualified under instruction U3.1(c) shall promptly leave the course area.

U4 PENALTIES AND PROTESTS INITIATED BY AN UMPIRE;

U4.1 When a boat

- (a) breaks RRS 31 and does not take a penalty,
- (b) breaks RRS 42,
- (c) gains an advantage despite taking a penalty,
- (d) commits a breach of sportsmanship, or
- (e) fails to take a voluntary penalty under U2.2 that she has indicated she will take or comply with instruction U3.2 or to take a penalty when required to do so by an umpire, or
- (f) is in breach of SI Attachment 3.

An umpire may penalize her without a protest by another boat. The umpire may impose one or more One-Turn Penalties to be taken as described in RRS 44.2 except that in addition the head of the spinnaker must be below the gooseneck before passing head to wind, each signaled in accordance with instruction U3.1(b), or disqualify her under instruction U3.1(c), or report the incident to the protest committee for further action. If a boat is penalized under instruction U4.1(f) for not taking a penalty or taking a penalty incorrectly, the original penalty is cancelled.

U4.2 when the umpires or race committee observe a boat or boats finishing who has/have incorrectly sailed the course they shall be scored points for last place without a hearing. This changes RRS 28, 61 and A5

U4.3 An umpire who decides, based on their own observation or a report received from any source, that a boat may have broken a rule, other than instruction U3.2 or U4.2(a) or a rule listed in instruction U2.1, may inform the protest committee for its action under RRS 60.3. However, they will not inform the protest committee of an alleged breach of RRS 14 unless there is damage or injury.

U5 PROTESTS; REQUESTS FOR REDRESS OR REOPENING; APPEALS; OTHER PROCEEDINGS

U5.1 No proceedings of any kind may be taken in relation to any action or non-action by an umpire.

U5.2 There shall be no request for redress or an appeal from a decision made under U2, U3 or U4. In RRS 66 the third sentence is changed to 'A party to the hearing may not ask for a reopening.'

U5.3

- (a) Protests and requests for redress need not be in writing.
- (b) The protest committee may take evidence and conduct the hearing in any way it considers appropriate and may communicate its decision orally.

- (c) If the protest committee decides that a breach of a rule has had no effect on the outcome of the race, it may impose a penalty of points or fraction of points or make another arrangement it decides is equitable, which may be to impose no penalty.
- U5.4 The race committee will not protest a boat, except following a report under RRS 43.1(c) or 78.3.
- U5.4 When the umpires decide that a boat has broken RRS 14 and damage resulted, they may impose a points-penalty without a hearing. The competitor shall be informed of the penalty as soon as practicable and, at the time of being so informed, may request a hearing. Any penalty decided at this hearing may be greater than that originally imposed.
- U5.5 The protest committee may protest a boat under RRS 60.3. However, it will not protest a boat for breaking instruction U3.2 or U4.2(a), a rule listed in instruction U2.1, or RRS 14 unless there is damage or injury.

Version 2: 06/07/16